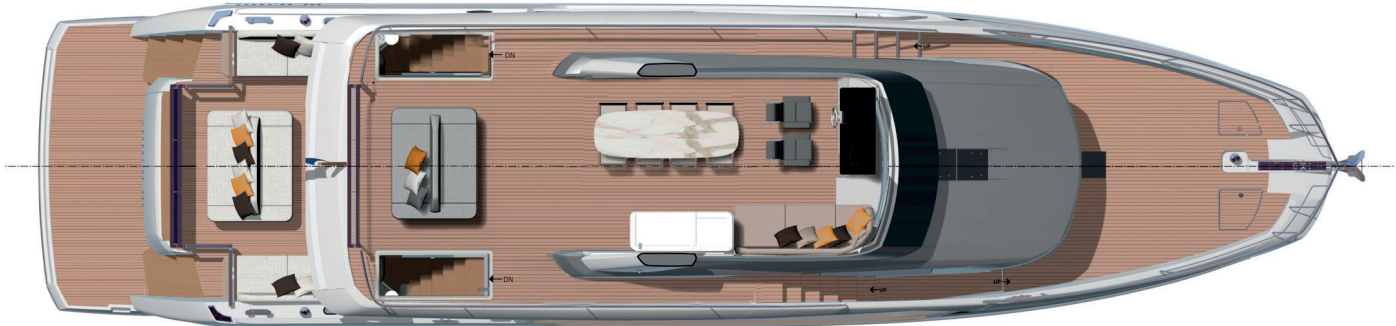


# X70

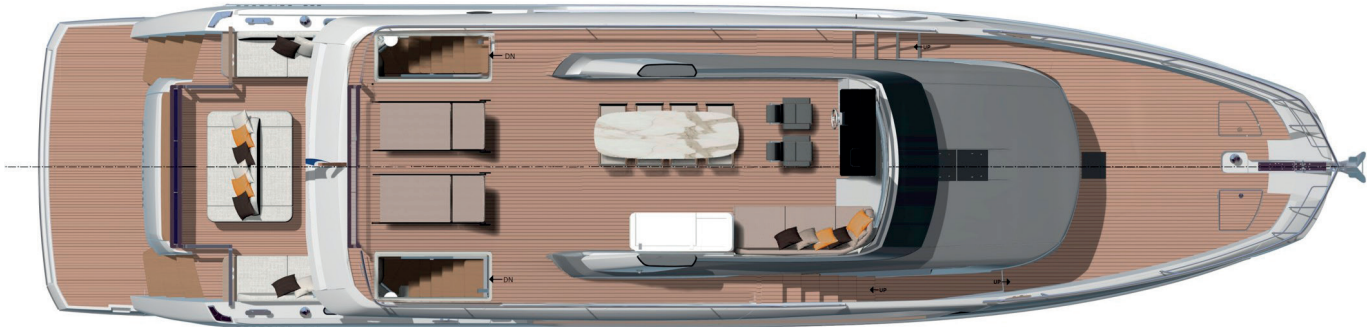


Overall length:	71' 7"	21,83 m
Beam:	17' 6"	5,34 m
Draft:	5' 7"	1,7 m
Light Displacement:	73 634 lbs	33 400 kg
Fuel capacity:	1057 US gal	4000 l
Water capacity:	201 US gal	760 l
Staterooms:	4 + Skipper option	
Engine:	VOLVO 2 x IPS 1200 - D13 900 HP VOLVO 2 x IPS 1350 - D13 1000 HP	
Designers:	Garroni Design / Valentina Militerno de Romedis / PRESTIGE Engineering	

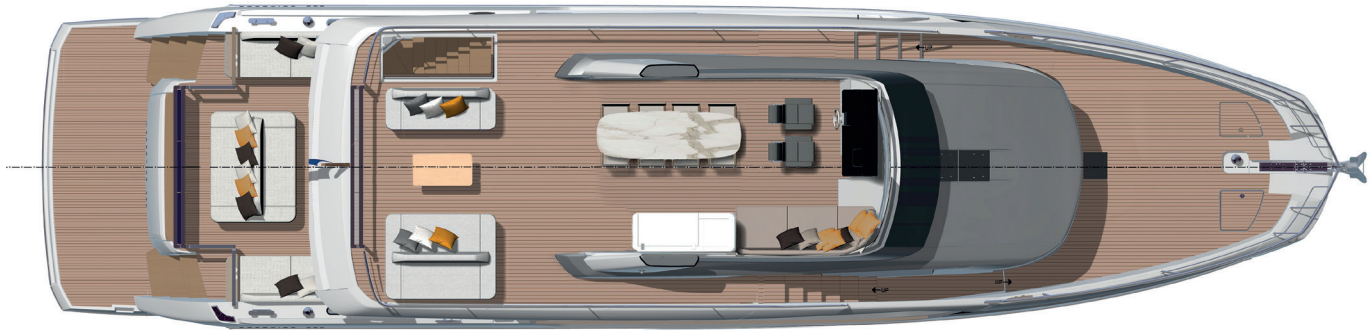
Connected boat technology. Equipped with **searapps**  
CONNECT YOUR BOAT FREE YOUR MIND



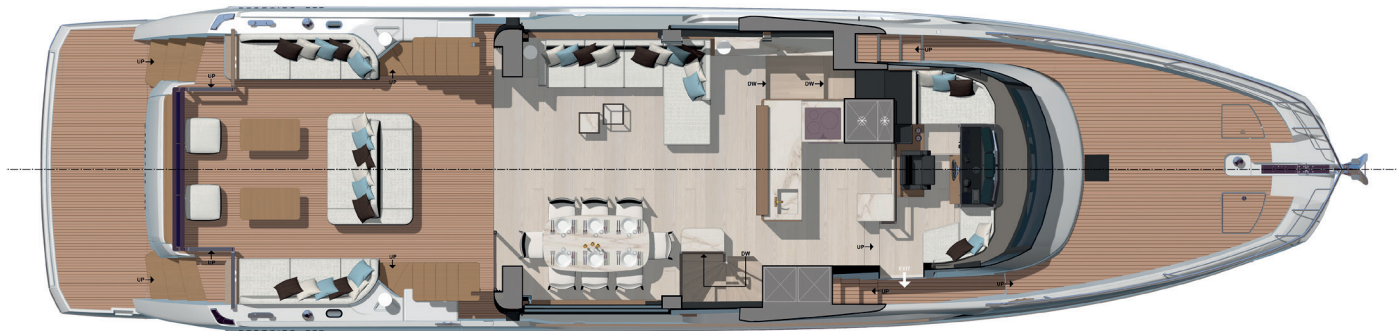
Flybridge



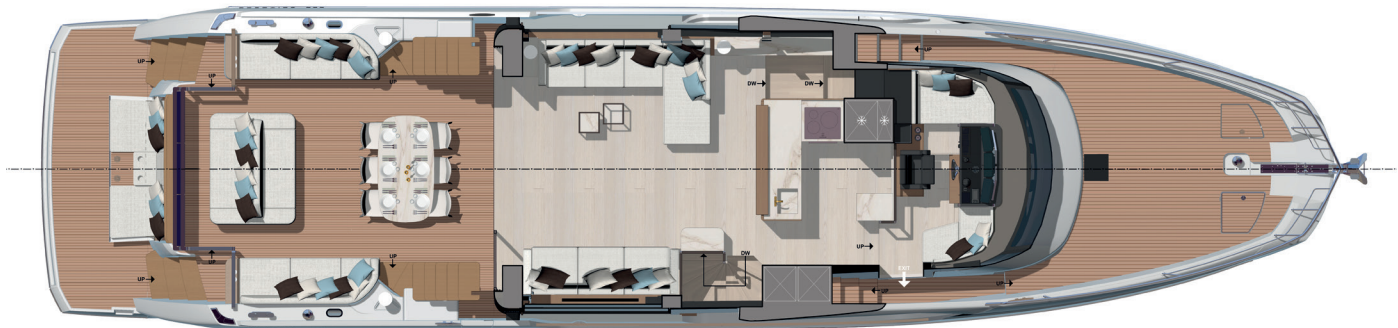
Flybridge



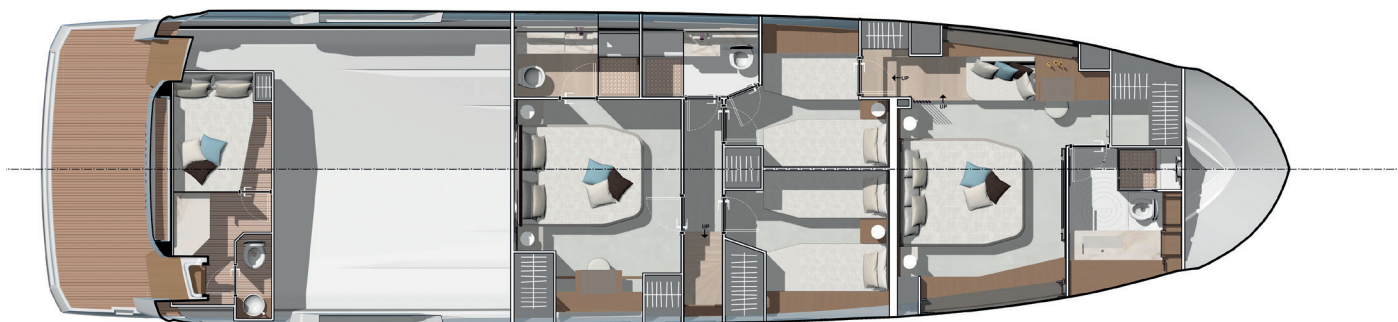
Flybridge



Main deck - Interior dining version



Main deck - Exterior dining version



Lower deck - 4 Stateroom version

## ENGLISH / Standard equipment

### Exterior upholstery

- Natte taupe chalk
- Sunbrella nature grey

### Woodwork

- Walnut interior woodwork

### Deck

- Stainless steel stem head fitting with anchor roller
- Anchor stop
- Electric windlass with wired remote in anchor locker (24V)
- Windlass controls at lower helm and flybridge
- Anchor locker with dedicated space for fender storage
- Stainless steel cleats (10)
- Stainless steel handrails
- Stainless steel rail
- Courtesy LED lights on sidedecks
- Mooring kit
- Anchoring kit
- 50kg anchor with 100m (328') of chain

### Bathing platform

- Hydraulic bathing platform
- Hot and cold shower
- Stainless steel bathing ladder

### Cockpit

- Island lounge with weighted backrests
- Double sofa seats with two-tone upholstery
- Coffee tables in cockpit on stainless steel legs (2)
- Aft sun awning/closing kit electric roll in and out with carbon fiber poles
- Dual flybridge staircases
- Teak-laid cockpit flooring
- Stainless steel ladder to flybridge
- Access hatch to the engine room with gas struts
- Transom safety gate (2)
- Lateral door in coaming
- 2 marine stereo speakers
- Overhead LED lighting
- Courtesy LED lighting
- Stern docking winch (port)
- Freshwater/saltwater deck washdown

### Flybridge

- Helm console with engine throttles and maneuvering joystick, compass, 12V plug, cup holders and storage compartment
- Navigation electronics including: Autopilot, VHF, 2 multifunction screens 22"
- Helm seats in carbon fiber
- Stainless steel guard rails
- Perspex windscreen
- Exterior dining table with Laminam top and 6 RODA chairs
- Island lounge with weighted backrests
- Seating area
- 2 marine stereo speakers
- Galley with corian furniture, wood doors, storage, grill & fridge
- Courtesy LED lighting
- Hardtop with electric sunroof

### Interior helm station

- Helm console with engine throttles and maneuvering joystick, full engine instrumentation, compass and cup holders
- Wireless charging station on console
- Navigation electronics including: Autopilot, VHF, 3 multifunction screens 16", Grid 20
- Upholstered captain's chair
- Lounging area to port and starboard
- Windscreen wipers with intermittent setting and washers
- USB plugs
- Searchlight with remotes at each helm station
- Horn

### Saloon

- Dining table with glass top and stainless steel leg
- Leather dining table chairs (6)
- Loggia electric window system to starboard & port
- Leather sofa Orange Hermès - Cream Beige
- Sliding lateral door to starboard
- Aluminum venetian window blinds
- Handrails with handstitched Foglizzo leather wrap
- Natural hardwood oak flooring
- Radio / CD / MP3 with Bluetooth in saloon
- 2 stereo speakers

### Galley

- Stainless steel sink
- Mixing tap
- Miele appliances (blower fan, microwave oven, dishwasher and fridge/freezer)
- 3 burner induction cooktop Miele
- Cordless vacuum cleaner and charging station
- Galley worktop in Laminam
- Fridge (331L / 87 US Gal)
- Freezer (115L / 30 US Gal)
- Waste bin
- Storage drawers and cupboards
- Natural hardwood oak flooring

### Master stateroom

- Independent access via private stairway
- Double bed (196 cm x 170 cm / 6'5" x 5'7")
- Innerspring mattress
- Mattress battens
- 2 reading lamps
- Bedside tables with storage
- Large closet with shelving
- Walk-in closet with shelving
- Storage cabinet
- Dressing table with mirror and stool
- Sofa
- Panoramic side windows with blinds, sheers and opening ports
- Removable carpet set
- Acoustic carpet underlay
- AC and USB plugs
- En suite bathroom
- Corian countertops and washbasin
- Soap dispenser & toothbrush holder
- Separate shower compartment
- Freshwater electric toilets
- Extractor fan
- AC plug
- Opening port
- Opening deck hatch with shade / insect screen

### VIP stateroom

- Double bed (197 cm x 147 cm / 6'5" x 4'9")
- Innerspring mattress
- 2 reading lamps
- Bedside tables
- Large closet with shelving
- Dressing table with mirror and stool
- Panoramic side windows with blinds, sheers and opening ports
- Removable carpet set
- Acoustic carpet underlay
- AC and USB plugs
- En suite bathroom
- Corian countertops and washbasin
- Soap dispenser & toothbrush holder
- Separate shower compartment
- Freshwater electric toilets
- Extractor fan
- AC plug
- Opening port

### Guest stateroom

- 2 single berths (195 cm/ 69 cm - 6'4" / 2'3") to port convertible in double berth
- 2 single berths (201 cm/ 70 cm - 6'7" / 2'3") to starboard convertible in double berth
- Reading lamp
- Bedside table with storage
- Large closet with shelving
- Panoramic side windows with blinds, sheers and opening ports
- Removable carpet set
- Acoustic carpet underlay
- AC and USB plugs
- Soap dispenser & toothbrush holder
- Separate shower compartment
- Freshwater electric toilets
- Extractor fan
- AC plug
- Opening port

### Crew Accommodation - option

- Single berth (198 cm/ 140 cm - 6'5" / 4'7")
- Storage closet
- Separate bathroom with toilet, washbasin and shower

- Additional holding tank (50L / 13 US Gal)
- Crew door access from bathing platform
- Tactile graphic display for battery levels, AC sources, lighting and tank levels
- Direct access to engine room

### Propulsion

- Joystick system for IPS
- IPS Nibral twin props
- Electronic power steering
- Electronic engine controls and throttles at each helm
- Single Lever, Cruise Control, Trim Computer and Low Speed functions
- Autopilot
- Bow thruster 24V dual prop (240 kgf/529 lbs.)
- Electric trim tabs
- Bronze seawater strainers
- Forced air ventilation system for engine room

### Electrical system

- Battery bank 24V - Engine (120 A/h)
- AGM Battery bank 24V - House (500 A/h)
- Battery bank crossover switch at helm
- Ship Control - Monitoring and control system connected to each MFD screen with dedicated 5" screen at entry
- Seanapps: connected box + mobile application for monitoring safety, navigation data, maintenance and comfort on board
- Remote battery switches
- Centralized distribution and breaker boxes for AC and DC systems
- AC shore power system
- Twin battery chargers 2 x 60A - 24V
- Inverter 2000W
- LED interior and exterior lighting with dimmer switches
- AC plugs in each cabin and in the galley and saloon

### Fuel system

- 2 fuel tanks (aluminum) with interconnection valves (4000L / 1 057 US Gal)
- Fuel fills to port and starboard with crossover valve
- Remote shut-off valves in aft cabin

### Water system

- Freshwater tanks - 760 L / 201 US Gal
- Hot water heater - 120 L / 32 US Gal
- Freshwater pressure pump
- Grey water sump pump with automatic discharge
- Dock water inlet with regulator
- Holding tank - 290 L / 77 US Gal
- Holding tank vent filters
- Overboard discharge pumps for holding tanks with macerator function and deck pump-out
- Automatic bilge pumps (5) with high water alarm
- Manual bilge pump

### Systems

- Chilled water air conditioning Mediterranean - 108,000 BTU
- Generator 17,5KVA 220V / 50HZ
- Automatic fire extinguishers in engine room with control at each helm (Novac 1230)
- Seakeeper 18

### Construction

- Infused GRP hull with longitudinal infused stringers
- Infused GRP deck with counter molding
- Isophthalic gelcoat
- Osmosis barrier
- Infused structural bulkheads

### Additional standard equipment

- User and Owner's manuals
- Captain's briefcase with set of manuals
- Factory preparation and launching
- Eco cleaning kit

### North american specifications

- Chilled water air conditioning incorporating reverse cycle heating - 111 000 / 114 000 BTU
- 22.5kW generator with underwater silent exhaust
- Glendinning cable management system
- Galvanic Isolator
- Cathodic bonding system with dedicated anodes